

# Regular Events

Weekly - no charge:

Space to Be	Sundays	0830 - 0915
-------------	---------	-------------

Reflective Communion	Tuesdays	0945 - 1030
----------------------	----------	-------------

Monthly - no charge:

Space to Reflect	1st Sunday	1900 - 2000
------------------	------------	-------------

Praying Without Words	3rd Thursday	1930 - 2100
-----------------------	--------------	-------------

More details on the website.

## OCCASIONAL FAVOURITES

### \* Simple Quiet Days \*

Communion followed by space to be with God.

Every 3rd Tuesday in the month, 9.45am - 3.45pm. £15.

Sep 17, Oct 15, Nov 19, Dec 17

### \* We Who Sing, Pray Twice \*

Learn simple, sacred rounds and chants in four-part harmony.

No need to book and no experience necessary.

Every other month. 7.30 - 9.30pm. No charge - donations welcome.

Sep 5, Nov 28

### \* Days of Retreat \*

Simple days of silence, facilitated by Recognised Spiritual Accompaniers. 9.30am - 4.30pm. £20.

Nov 13

## LIBRARY RELAUNCH!

Did you know you can now browse our spirituality library online?

Visit <https://whirlowlibrary1.libib.com/>

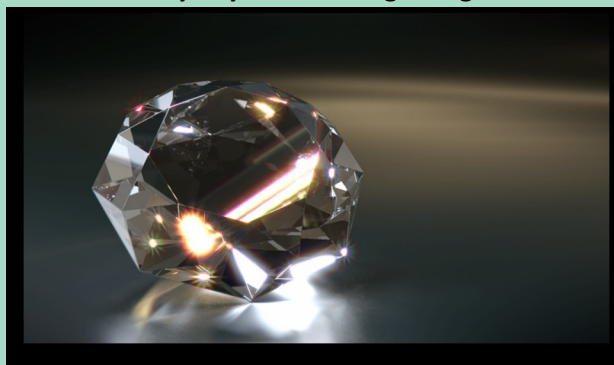
## Whirlow Spirituality Centre @ the Chapel of the Holy Spirit

Our chapel, set in a peaceful garden on the edge of the Peak District, is for individuals, groups and faith communities. You are welcome to slow down, relax, learn and play. This is a place in which to explore your spirituality through prayer, reflection and resourcing from the Christian tradition.

Whirlow has a chaplain - the Revd Joy Adams. The centre is managed by charitable company Whirlow Grange Ltd in partnership with All Saints, Ecclesall.

If you would like to know more, browse the library, hire the facilities or attend an event here, please get in touch.

### Every day is a new beginning....



There's lots going on this season - long-established events and new initiatives. You are invited to recharge your batteries or gain inspiration at any and all of these. Advent is always special at Whirlow and we look forward (with no rush!) to that season.

- \* Space to Reflect is the new name for our monthly Sunday evening gathering, at which all explorers are welcome
- \* Quiet days will focus on Henri Nouwen, R. S. Thomas, Julian of Norwich - and more
- \* Life-coaching series, Becoming Whole, launches in November.

Whether you attend these or one of our regular events, hire us as a venue or simply pop in, consider yourself welcome!

[whirlowspiritualitycentre.org](https://whirlowspiritualitycentre.org)



Whirlow  
Spirituality  
Centre

# What's On Sep - Dec 2019



For explorers in a busy world:  
a quiet place to pause  
and meet with  
God.

Whirlow Grange Close

Whirlow

Sheffield

S11 9SY

Phone: 0114 2353704

E-mail: [events@whirlowspiritualitycentre.org](mailto:events@whirlowspiritualitycentre.org)

Website: [whirlowspiritualitycentre.org](https://whirlowspiritualitycentre.org)

or find us on [facebook](#) / [twitter](#) @whirlowchapel

# BOOKING FORM

The easiest way to find out more details and book tickets for our events is online, via [whirlowspiritualitycentre.org/whats-on](http://whirlowspiritualitycentre.org/whats-on)

Please use this method where possible.

If you need to book by post, please complete the form below in clear print and send it with a cheque for the full amount, payable to Whirlow Grange Limited, to:

## Bookings

**Whirlow Spirituality Centre**  
**Whirlow Grange Close**  
**Sheffield**  
**S11 9SY**

Give us a call on 0114 2 353704 if you have questions!

We cannot guarantee a place until payment is received. Some events do fill up. If paying by post, please call us to provisionally reserve a space on 0114 2 353704. Note that for full-day events, you will *usually* need to bring your own lunch. We do not issue tickets but a reminder and details will be sent out by email about a week before your event.

YOUR NAME: \_\_\_\_\_  
EVENT YOU WISH TO ATTEND: \_\_\_\_\_  
DATE OF EVENT: \_\_\_\_\_  
TICKET PRICE (£): \_\_\_\_\_  
HOW MANY TICKETS YOU REQUIRE: \_\_\_\_\_  
YOUR TELEPHONE NUMBER: \_\_\_\_\_  
YOUR EMAIL ADDRESS: \_\_\_\_\_  
YOUR POSTAL ADDRESS: \_\_\_\_\_

**Please phone ahead if you / your guests have any special needs.**

Please return this form with a cheque for the full amount. We will confirm receipt. If booking for multiple events and unable to use the website, email details to

[events@whirlowspiritualitycentre.org](mailto:events@whirlowspiritualitycentre.org) or phone **0114 2 353704**

# September

9th & 23rd, 1930 - 2100, £5 each. [Cloud of Unknowing book group](#)

**See separate panel.** Book the series of six for £25.

13th & 14th, 1300 - 1500 & 1000 - 1300. Free. [Heritage Open Days](#)

Drop in and (re)discover Whirlow, featuring stories of people and places.

14th, 800 - 930, £10. [Cold Calling](#)

A discussion opportunity for anybody bruised or perplexed by their experience of the 'discernment' process for ordination within a Christian denomination. Share your story over breakfast.

22nd, 930 - 1015, Free. [Contemplative Dialogue.](#)

A non-threatening, 'safe place' for discussion focused on listening.

**The Cloud of Unknowing book group will explore this well-loved, profound mediaeval text as a way into deeper understanding of contemplative prayer.**

**Discuss and reflect across six evenings. If possible, read a translation of the text and attend all or several sessions.**

# October

1st, 1900 - 2100, Free. [Resource Evening for Spiritual Accompaniers](#)

Conversation, listening practice and peer supervision.

3rd, 930 - 1630, £18. [Deep Talk - Overwhelmed / Underwhelmed](#)

Discover the Deep Talk method: story-telling that opens up a communal exploration of participants' life journeys. With Jeremy Clines.

7th & 14th, 1930 - 2100, £5 each. [Cloud of Unknowing book group](#)

12th, 1930, £15. [Strings, Songs and Storytelling](#)

An 'up close and personal' performance by Caroline Hallam and the Guild of Strings. Featuring Strauss' Capriccio sextet. Drinks included.

19th, 930 - 1600, £35. [Autumn Retreat with Henri Nouwen.](#)

Led by biographer Michael Ford, encounter Father Nouwen as a Lonely Mystic (title of Dr Ford's latest book.) Explore Henri's writings on prayer and divine intimacy, his joys and struggles as an active contemplative.

23rd, 930 - 1530. £18. [Julian of Norwich Quiet Day.](#)

Julian is best known through her *Revelations of Divine Love*. This day will open up her life and story as a resource for participants' own reflections and spiritual journeying.

# November

4th & 25th. 1930 - 2100, £5 each. [Cloud of Unknowing book group](#)

9th, 1000 - 1600, £25. [Desert Day](#)

Time set apart to meditate on the Word, rest and let go in silence. Suited to those who enjoy any form of silent prayer or wish to gently explore it. Drawing on the practices of desert Fathers and Mothers. With Mel King.

16th, 1000 - 1630, £35. [Becoming Whole Coaching Retreat: Our Embodied Self](#) See separate panel. Book the series of four for £125.

28th, 1000 - 1600. £20. [Praying With R S Thomas](#)

The poetry of Welsh priest R S Thomas can be a valuable resource for prayer and meditation. Reflect on selected poems and nourish personal faith. With Graham Pigott.

**Becoming Whole is a series of life-coaching retreats advocating the mindful exploration of a person's different 'selves' on the journey towards wholeness.**

Embodied Self (16.11.19); Shadow Self (8.2.20); Playful/Creative Self (25.4.20); Integrated Self (11.7.20).

**Facilitated by Master Coach, Jane Moffat. Lunch included.**

# December

1st - Jan 4th, [Woman in Waiting](#)

An Advent exhibition by Sarah Sharpe about creation and loss, inspired by Mary's call to wait; give birth; and let go.

4th & 7th, 930 - 1530, £18. [Advent Quiet Days](#)

Identical days providing an opportunity to watch and wait for the coming Christ.

12th, 930 - 1200, £10. [In Waiting... Creative Workshop](#)

Participants will be guided by Sarah Sharpe in making a personal, artistic response to the Advent exhibition. No experience necessary!

25th, 940 - 1030. Free. [Christmas Day service.](#) All welcome.

**More details of all events at [whirlowspiritualitycentre.org/whats-on](http://whirlowspiritualitycentre.org/whats-on)**